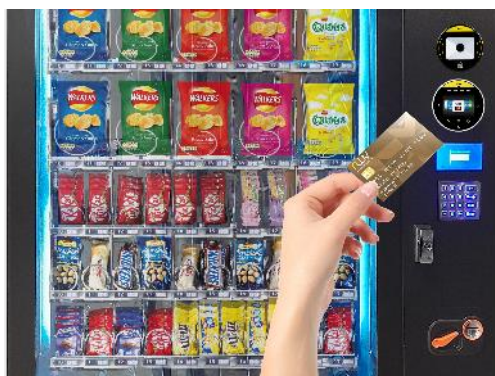




Refresh 60 with cash and optional cashless mechanism, and Nayax dot reader.



## Product Group

Confectionery

## Product Sub-Group

Snacks

## Refresh 60

The dynamic Refresh 60 is packed with cutting edge technologies and features. With a potential 60 selection and up to a massive 900 product capacity the Refresh 60 offers huge retail potential and informed consumer choices. The bright and clear display allows the Refresh 60 to offer pricing, allergen and nutritional information before a purchase is made. When you are ready to pay, the Refresh 60's cloud based remote telemetry system allows greater integration payment systems, including cash, contactless card, mobile phone payment and the Nayax dot reader.

When supplied with the Nayax dot reader, it can read pre-paid Nayax cards and key fobs using optical or Nearfield communication. This means offers can be created online and distributed by barcode or loaded onto cards and fobs. The Nayax card system can be integrated as an electronic wallet app to be downloaded by mobile phones on both Apple Store app and Google Play store app.

The technology revolution doesn't end there; using vend detection technology, consumers can be assured that they only pay for products that have vended. With extensive insulation of the cabinet, L.E.D. lighting and an advanced energy management the Refresh 60 has low energy consumption, good for your wallet and the environment. The wealth of features is designed to enhance user experience and increase sales.

Simple button selection menu and clear information display makes the Refresh 60 so easy to use.

Payment by cash, contactless debit or credit card, mobile phone, and even smart watch

Refresh 60 capacity, standard configuration 3 trays of snacks 225 items, 3 trays of confectionery selections for 350 items.

Footprint 1920mm (h) x 1180mm (w) x 855mm (d)

Weight 360Kg

Electricals 13-amp standard mains electricity connection



Excellent After Sales Service



Full Technical Support



World Class Technology